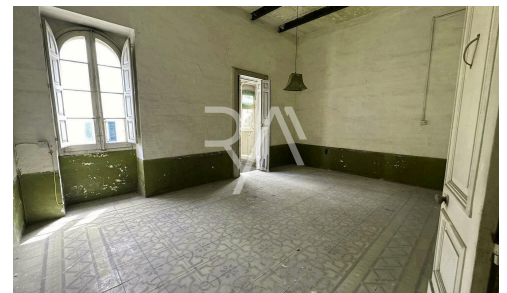
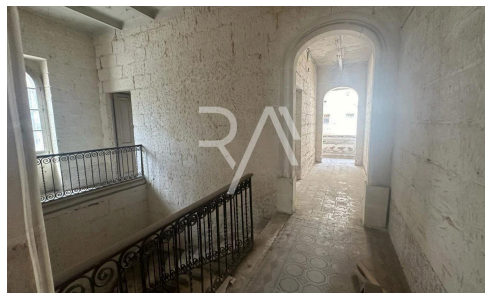


#5216



## Two Adjacent Townhouses

€1,100,000

📍 Sliema, Sliema and St Julians Surroundings

SLIEMA – Two adjacent townhouses are being sold together, with a combined floor area of around 280 square metres. Located in the village core in a UCA (urban conservation area), the properties, full of traditional features are waiting to be converted back into a large home, two or more separate dwellings or even a guest house.

The joint properties comprise of 14 rooms on two floors, a basement and two courtyards, with the potential to extend. This is an interesting project that must be viewed to see its full potential.

Bedrooms

🛏 8

Bathrooms

🚿 5

Covered

📏 230 m<sup>2</sup>

yourmove 



Ilya Schembri

📞 (+356) 79907192

📧 [ilya@realagents.com.mt](mailto:ilya@realagents.com.mt)

