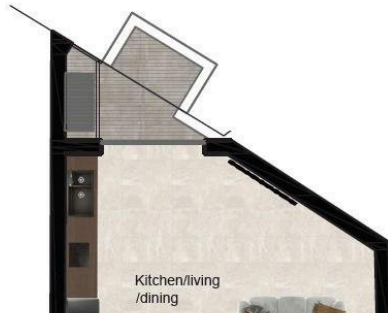


#5320

NET FLOOR AREA: 82.00 SQM  
GROSS FLOOR AREA: 91.00 SQM

€270,000



## Apartments in Msida | Sliema and St Julians Surroundings

€270,000

 Msida, Sliema and St Julians Surroundings

MSIDA - Duplex apartment with layout comprising an open plan kitchen, living, dining leading to a balcony, a bedroom and a bathroom at lower level and a large bedroom with an ensuite and storage at upper level. The property will be sold finished excluding bathrooms and doors.

Bedrooms

 2


Bathrooms

 2

Covered

 82 m<sup>2</sup>

**yourmove** 

**Ilya Schembri** (+356) 79907192 [ilya@realagents.com.mt](mailto:ilya@realagents.com.mt)