

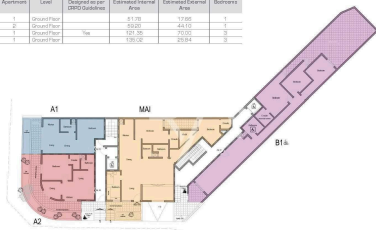
#5393

in Shell Form

April 2026

Finished (External envelope)  
December 2026

GROUND Floor Plan						
Block	Apartment	Level	Designed as per 2015 Building Code	Estimated Internal Area	Estimated External Area	Bedrooms
A	1	Ground Floor		51.73	72.03	1
	2	Ground Floor		42.00	44.10	1
B	1	Ground Floor	Yes	121.50	202.00	3
	2	Ground Floor		120.50	200.00	3



Disclaimer: Layout, plans and areas are subject to minor modifications

FIRST Floor Plan						
Block	Apartment	Level	Designed as per 2015 Building Code	Estimated Internal Area	Estimated External Area	Bedrooms
A	3	Level 1		51.77	83.84	1
	4	Level 1		51.54	71.39	2
B	3	Level 1	Yes	120.50	200.00	3
	4	Level 1		120.50	200.00	3



Disclaimer: Layout, plans and areas are subject to minor modifications

SECOND Floor Plan						
Block	Apartment	Level	Designed as per 2015 Building Code	Estimated Internal Area	Estimated External Area	Bedrooms
A	5	Level 2		51.77	83.84	1
	6	Level 2		51.54	71.39	2
B	5	Level 2	Yes	120.50	200.00	3
	6	Level 2		120.50	200.00	3



Disclaimer: Layout, plans and areas are subject to minor modifications

## Apartments in San Pawl Il-Bahar - Qawra | Northern

€231,000

San Pawl Il-Bahar - Qawra, Northern

Qawra New Development, offering 2 and 3 bedroom Apartments and Penthouses

Contact Listing Agent Ilya for a viewing presentation M: 79907192

Thoughtfully designed block is situated in a vibrant and highly sought-after area, close to all essential amenities, including shops, supermarkets, pharmacies, and a variety of dining and entertainment options, all within walking

Bedrooms

2

Bathrooms

2

Covered

 95 m<sup>2</sup>

yourmove



Ilya Schembri

(+356) 79907192

ilya@realagents.com.mt

