

#5399

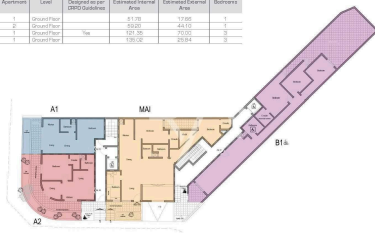
I in Shell Form

April 2026

Finished (External envelope)
December 2026

GROUND Floor Plan

Block	Apartment	Level	Designed as per 2015 Building Code	Estimated Internal Area	Estimated External Area	Bedrooms
A	1	Ground Floor		51.73	72.03	1
A	2	Ground Floor		42.00	44.10	1
B	1	Ground Floor	Yes	121.50	202.00	3
B	2	Ground Floor		120.50	200.00	3



Disclaimer: Layout, plans and areas are subject to minor modifications.

FIRST Floor Plan

Block	Apartment	Level	Designed as per 2015 Building Code	Estimated Internal Area	Estimated External Area	Bedrooms
A	3	Level 1		51.77	83.84	1
A	4	Level 1		51.84	71.39	2
A	5	Level 1		50.57	71.92	2
A	6	Level 1	Yes	120.36	211.91	3



Disclaimer: Layout, plans and areas are subject to minor modifications.

SECOND Floor Plan

Block	Apartment	Level	Designed as per 2015 Building Code	Estimated Internal Area	Estimated External Area	Bedrooms
A	6	Level 2		51.77	83.84	1
A	6	Level 2		51.84	71.39	2
A	6	Level 2		50.57	71.92	2
A	6	Level 2	Yes	120.36	211.91	3



Disclaimer: Layout, plans and areas are subject to minor modifications.

Apartments in San Pawl Il-Bahar - Qawra | Northern

€240,000

San Pawl Il-Bahar - Qawra, Northern

Qawra New Development, offering 2 and 3 bedroom Apartments and Penthouses

Contact Listing Agent Ilya for a viewing presentation M: 79907192

Thoughtfully designed block is situated in a vibrant and highly sought-after area, close to all essential amenities, including shops, supermarkets, pharmacies, and a variety of dining and entertainment options, all within walking

Bedrooms

2

Bathrooms

2

Covered

 91 m²

yourmove



Ilya Schembri

(+356) 79907192

ilya@realagents.com.mt

