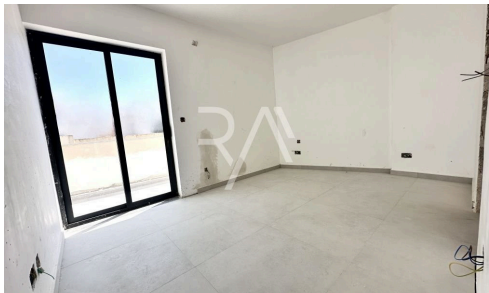
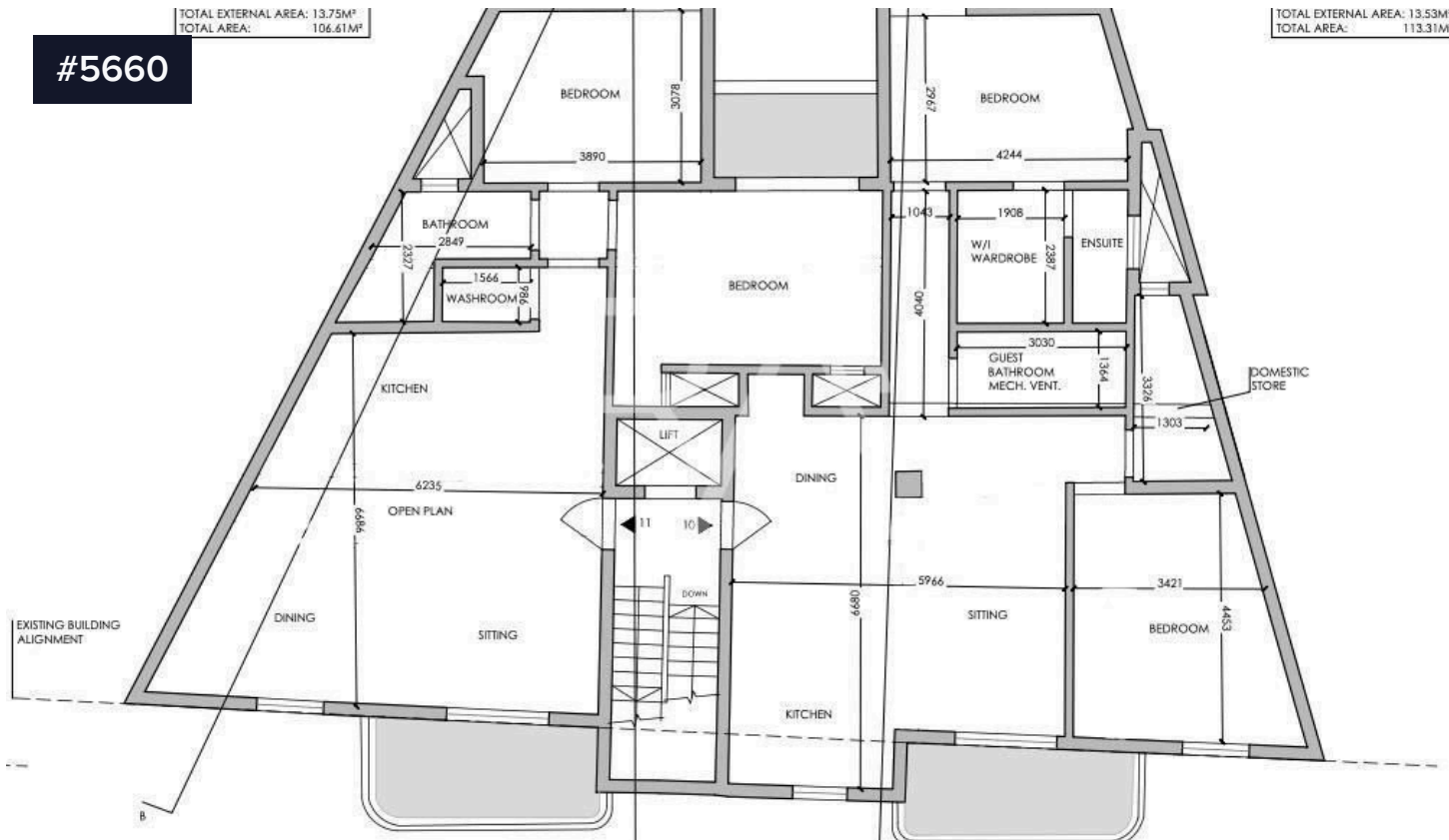


#5660

TOTAL EXTERNAL AREA: 13.75M<sup>2</sup>  
TOTAL AREA: 106.61M<sup>2</sup>TOTAL EXTERNAL AREA: 13.53M<sup>2</sup>  
TOTAL AREA: 113.31M<sup>2</sup>

## Apartments in San Pawl Il-Bahar - Qawra | Northern

€282,000

📍 San Pawl Il-Bahar - Qawra, Northern

Large 2 bedroom having a combined K/L/D, and a front terrace, spacious spare bedroom, domestic store a main bathroom and a main bedroom with a walk in wardrobe and an ensuite

Bedrooms

🛏 2

Bathrooms

🚿 2

Covered

📏 100 m<sup>2</sup>

yourmove



Ilya Schembri

📞 (+356) 79907192

📧 ilya@realagents.com.mt

