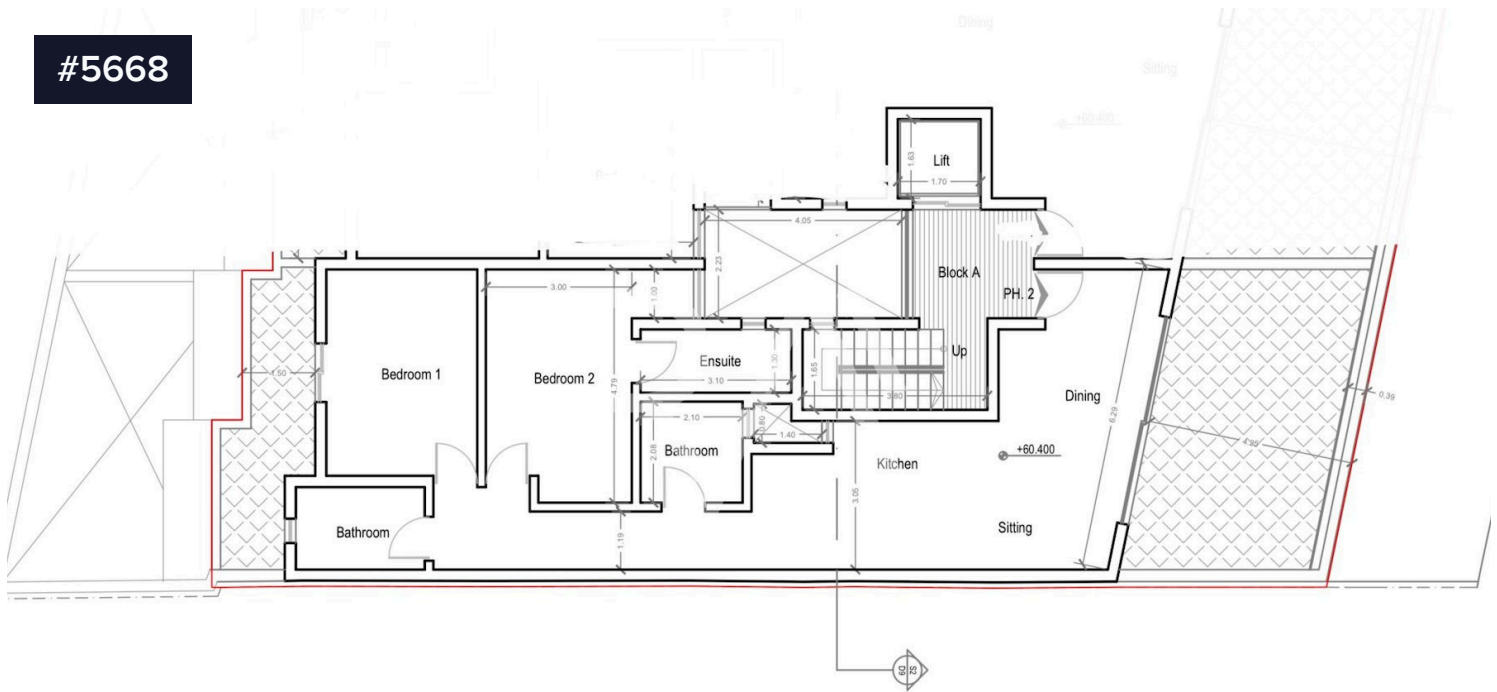


#5668



Proposed Penthouse Floor

Scale 1:100

Swieqi 2 bedroom Penthouse APH2

€530,000

📍 Swieqi, Sliema and St Julians Surroundings

Swieqi 2 Bedroom Penthouse

Currently under construction, situated in a central area of Swieqi close to amenities.

Layout comes in the form of a kitchen/living/dining, large south facing terrace, two double bedrooms, bathroom, ensuite, a back balcony, and a third bathroom (or optional laundry room).

Optional garages from €45,000

Contact listing agent on 79907192

Bedrooms



Bathrooms



Covered



yourmove



Ilya Schembri

📞 (+356) 79907192

📧 ilya@realagents.com.mt

