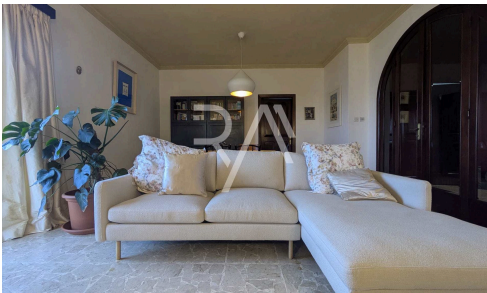
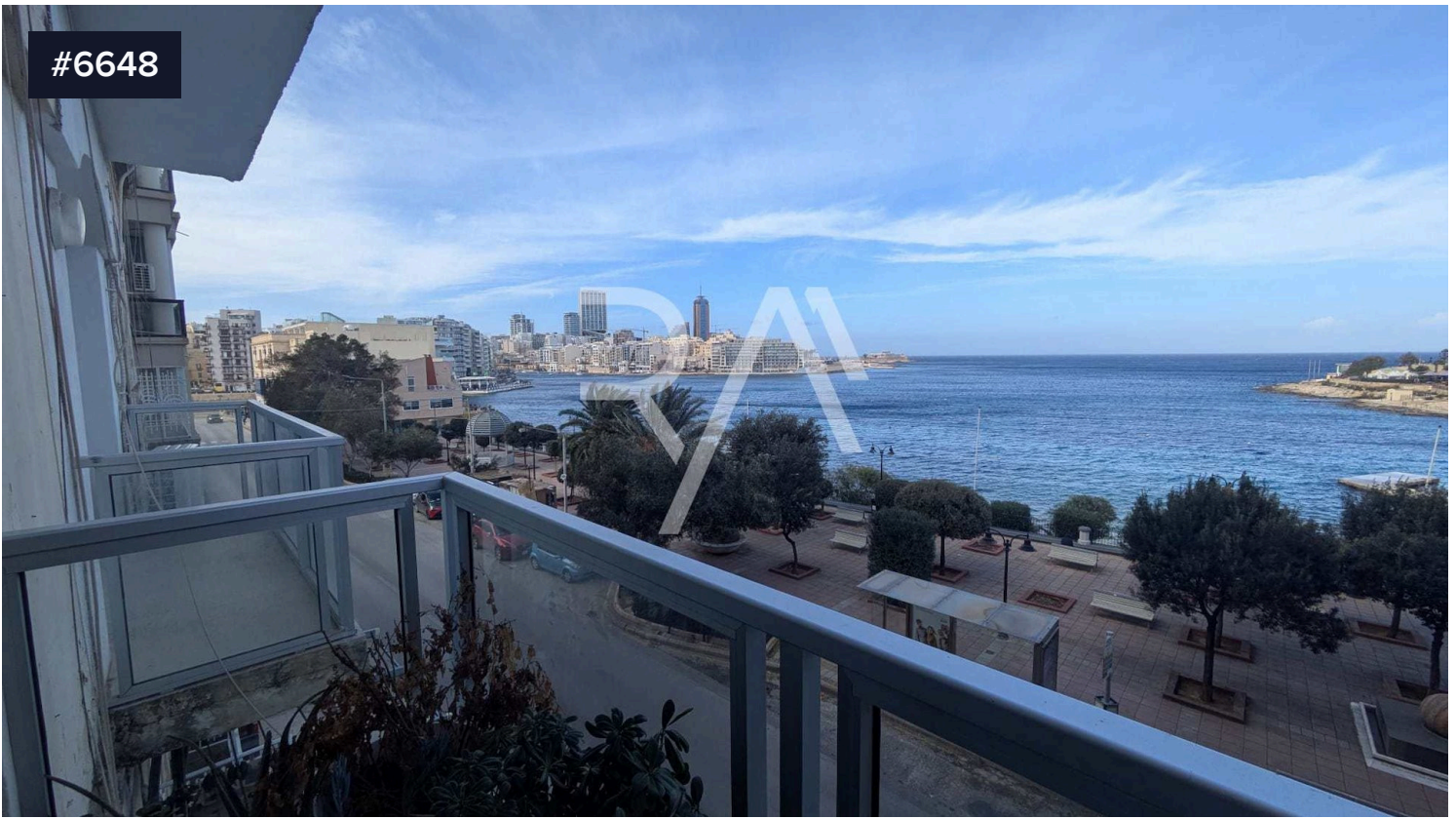


#6648



## Apartments in Sliema | Sliema and St Julians Surroundings

€810,000

 Sliema, Sliema and St Julians Surroundings

Set on the prestigious Tower Road seafront, this spacious second-floor apartment enjoys a double frontage and an abundance of natural light, forming part of a well-maintained block served with a lift. The apartment welcomes you with a comfortable entrance hall leading into a bright sitting and dining area that opens onto a 7.7-metre front balcony overlooking Tower Road, offering a lovely open outlook and a perfect space to enjoy the surroundings. The layout is both practical and generous, featuring two wide internal halls that lead to the sleeping quarters.

Bedrooms

 3

Bathrooms

 2


Covered

 140 m<sup>2</sup>

**yourmove** 



**Ilya Schembri**

 (+356) 79907192

 [ilya@realagents.com.mt](mailto:ilya@realagents.com.mt)

